



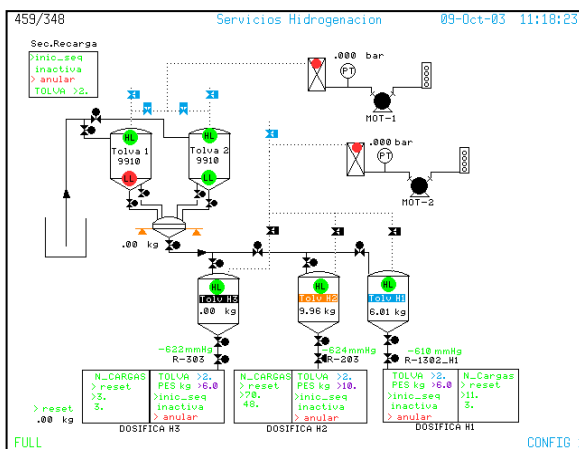
## RS3 Virtual Printer

- *Still using a Fujitsu dot matrix printer for RS3 printouts?*
- *Tired of paper jams, expensive consumables and repair costs?*
- *Need copies of RS3 Process Graphics, Trend Displays or Report Files stored in a PC format?*



### Introduction

The RS3 Virtual Printer allows the connection of an RS3 printer cable to a personal computer for printing to any printer supported by Microsoft 2000/XP/7 operating systems. This allows Fujitsu system printers to be replaced with more up to date, cost effective printers. The print format expands the screen print to a full A4 page in color, while consumables such as ink and paper are widely available and less costly.



### Functionality

- Software application to run on Windows XP/Win7/8/10
- Accepts printout from any MTCC console on the RS3 Peerway
- PC connects to standard RS3 console printer output port
- Auto-print to any local or network connected A4 printer
- Supports separate printers for text and color printouts
- RS3 Graphic Screen Prints fill A4 page in landscape mode
- Printouts buffered by Windows spooling if printer is not on-line
- All printed matter optionally stored as bitmap image and text files on hard disk
- Options configured from simple Windows interface
- Configurable color mapping
- Multi page text printed with "Page n of nn" for each page
- Automatic archiving and sub directory support for Process Graphics, ABCBatch (RBL) Files and Screen Prints
- Specification of disk, folder and file name for auto-save and distribution of RS3 Report Files



## RS3 Printer Functionality

When Fisher-Rosemount introduced the RS3 system in 1984, the Fujitsu dot matrix printer represented the state of the art in color printing. Driver support for the DL2400 printer was embedded in the MTCC console hardware electronics.

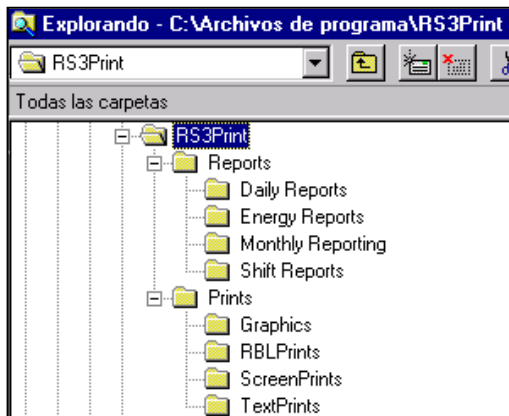
This allows both text and graphic printouts, but only for the specified printer. While other serial printers may be used for text printouts, the only color graphics option is the original model, supported as an emulation mode in some later Fujitsu dot matrix printers.

## Emerson Process Management migration path

Emerson Process Management (formally Fisher Rosemount) is commercially and technically committed to substituting the MTCC consoles with Delta-V Operate Consoles. No further improvement to existing MTCC console functionality is anticipated.

## Product Specification

- CD containing installation program, user and installation guide
- BIOS based software protection keycode
- Single Peerway license agreement
- Adaptor RS3 Printer Cable to 9 Pin PC comms port
- Approved USB-adaptor for PCs without 9 pin comm port



## Hardware Requirements

- Processor Minimum: Pentium 300Mhz
- Installed Memory: Minimum 256MB
- Free Disk Space: Minimum 300MB
- Available com port (COM2 to COM4) or USB port.
- Any Version of Microsoft Windows (From XP to Windows10)
- Color Printer: Any printer supported by the Microsoft operating system.

## Observations

- RS3 Single Line Alarm Print function is not supported by this application. Alarms can be configured in pages of 50 lines
- When using RS3 P1 software, printer baud rate must be configured as 4800 in the RS3 console.
- The application must be running continuously, preferably under control of a default user login.
- Speed of graphic printout is subject to processor speed, available memory and print resolution.

## Try before you buy!

We are so confident that you will like the product, we offer the software free on a trial basis. Yes, you have read this correctly, **completely free.**

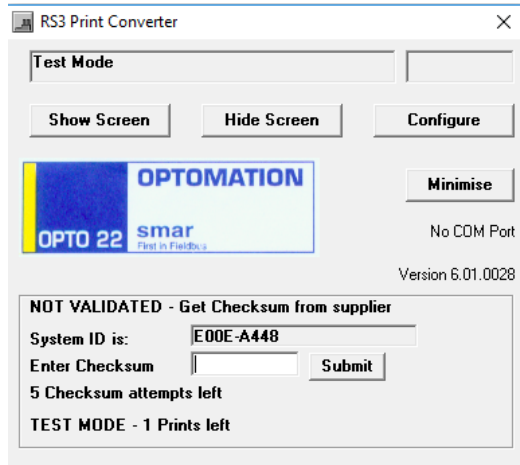
In trial mode you can confirm that the software installs correctly on any PC, check out all the configuration options and even print out **up to 10 screen prints** from RS3.

For modern PC's without COM ports, we also include an approved USB-adaptor for direct connection to your existing 25Pin RS3 Printer Interface Cable, along with the software CD.



## Licensing your purchased copy

After 10 screen prints in TEST MODE, the printing function is disabled.



If you want to continue to use the software, it will have to be registered with us and licensed. If you do not wish to continue to use the software, just uninstall it.

Note that reinstalling the software will not allow further printing in TEST MODE. reinstalling the software will not allow further printing.

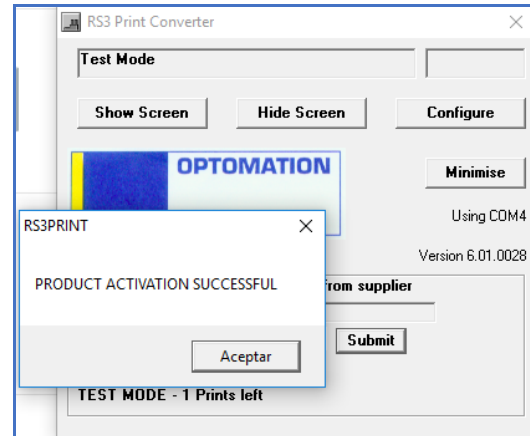
To register the software, you will need to provide evidence of an official order from us or authorized reseller and a copy of the **Unique System ID**, which was autogenerated by the software on installation.

This System ID is partly based on information provided by the PC BIOS and therefore valid for one machine only. Choose wisely your final PC! We also recommend sending us a screen copy to avoid errors in copying the System ID

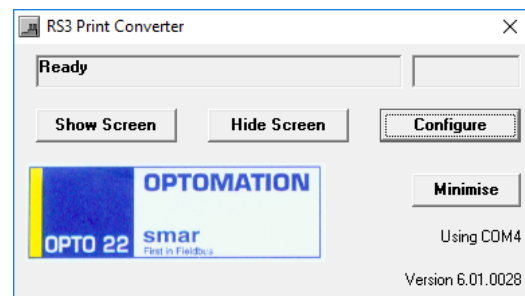
Optomation Systems will then return by email the corresponding **Checksum** for your **Unique System ID**.

Introduce this returned Checksum in the corresponding field and press submit to activate the license. Note that a maximum of 5 attempts are allowed.

A popup window informs of successful product activation



The validation option will then disappear and the product is fully licensed for unlimited printing.



## Optomation Systems

Optomation Systems is an independent software house, with nearly 30 years' experience of the RS3 Distributed Control System. In addition to RS3 hardware, software, training, maintenance and application software support, Optomation also supports compatible products and solutions that provide independent migratory paths and life extension for the RS3 control system. This activity is not endorsed in any way by Fisher-Rosemount.

The contents of this publication are presented for information purposes only. We reserve the right to modify or improve the designs or specifications of our products at any time without notice.

All trademarks, trade names, logos and service marks belong to their respective companies